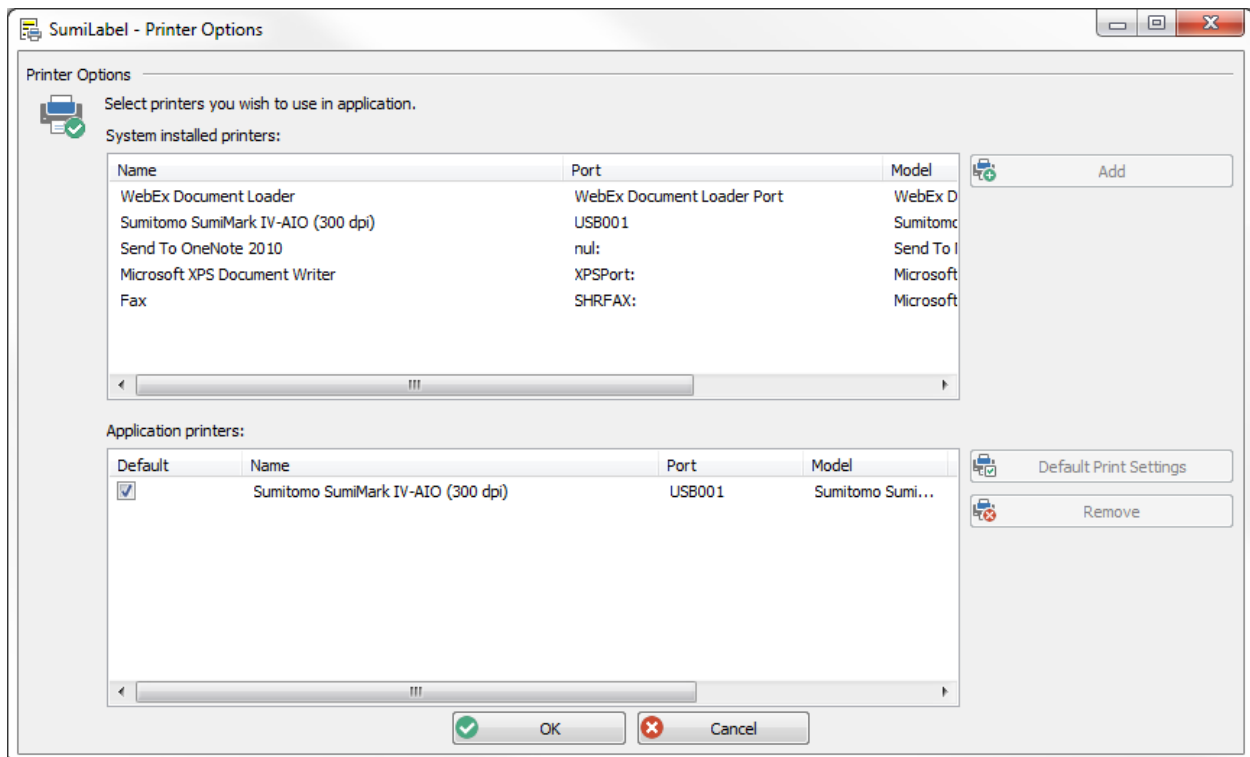


How to Change the Print Settings

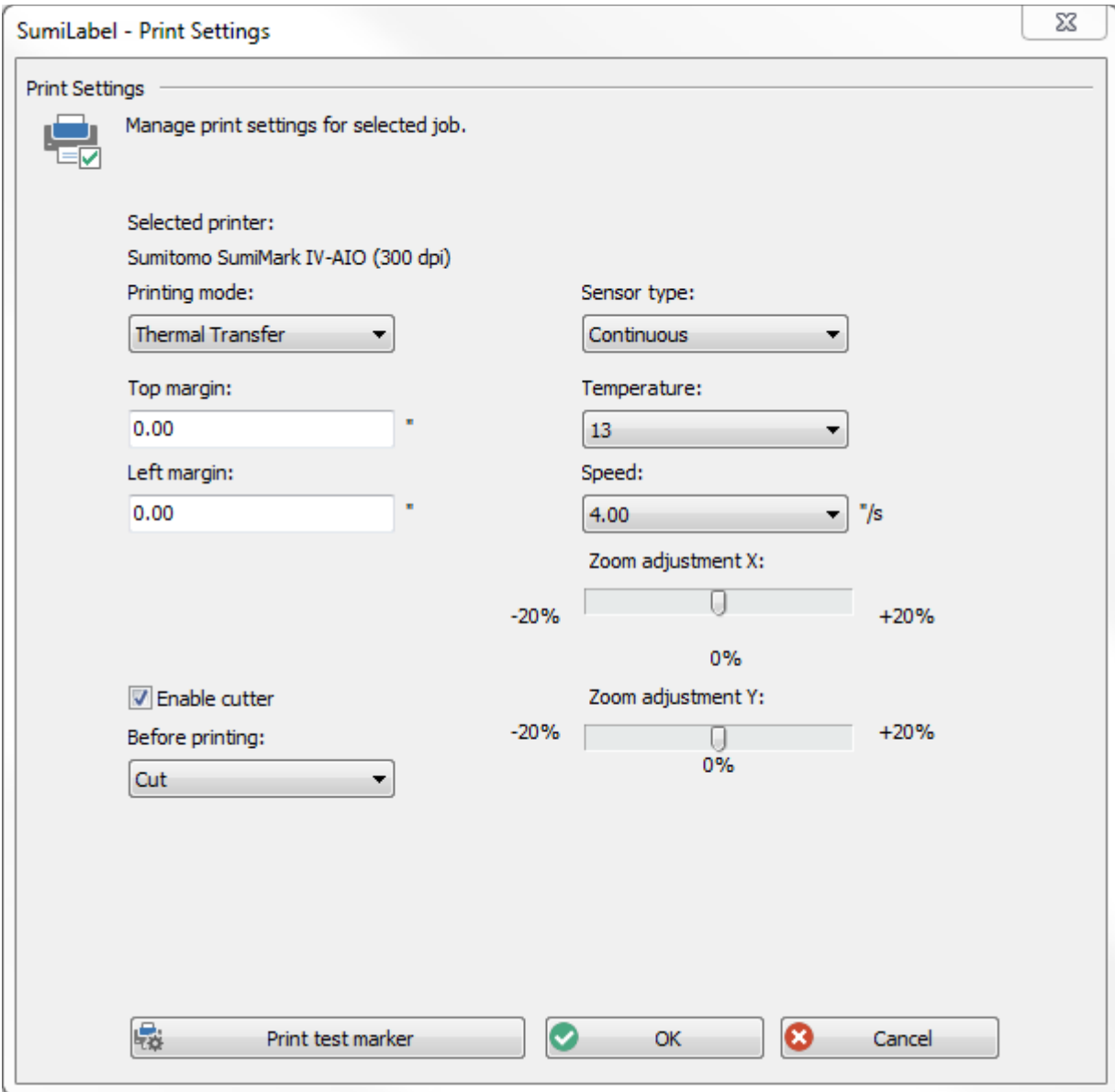
So many possibilities

Your printing can be affected by a variety of printer settings, such as the printhead's temperature, the speed, material and sensor type, and more. The Default Print Settings window enables you to change the defaults for each of these settings to suit your needs.

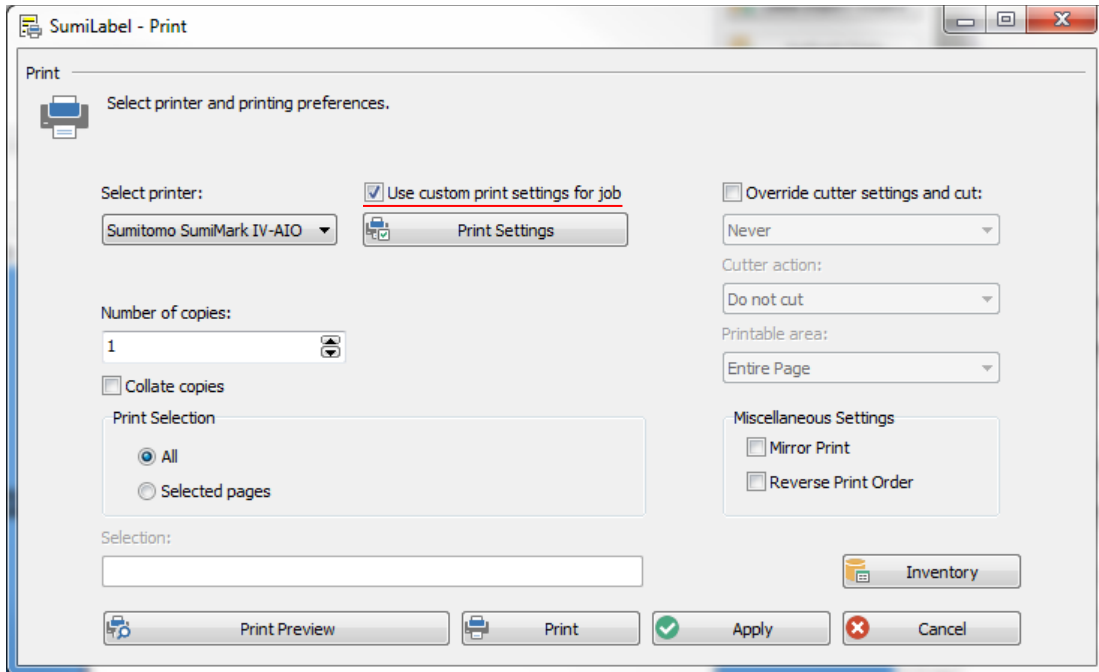
1. After starting Sumilabel, from the "Sumilabel – Explorer" window, navigate to Options -> Printer Options.



2. Select your printer in the "Application printers" subsection, then click Default Print Settings, located to the right.



3. Within the “Sumilabel – Print Settings” window, you will see a variety of options, ranging from print margins to the printhead temperature and more. The settings here become the standard for all print jobs, unless they are specifically changed on a per-job basis.
Important: *It is not advised that you change any settings in the Print Settings window unless directed to do so by a SumiMark Technician. They may have unintended consequences. If you do make a change, be sure to note the setting both before and after change in the event that you require support.*
4. When you’re finished, click OK to return to the “Sumilabel – Explorer” window, then create or open a Set file and perform a test print to see the results.



- To change the print settings per-job, check the “Use custom print settings for job” checkbox in the “Sumilabel – Print” window, then click Print Settings to make changes.

Default Print Settings—

Setting Name	Value
Printing mode	Thermal Transfer
Sensor type	Continuous
Top margin	0.00”
Left margin	0.00”
Temperature	13
Speed	4.00”/s
Zoom adjustment X	0%
Zoom adjustment Y	0%
Enable cutter	Checked
Before printing	Cut

If you have any questions, comments, or concerns, please don’t hesitate to contact Identification Technical Support:

- Phone : +1 (760) 761-0600 x255
- E-mail : sumimark@seipusa.com
- sumitomo.freshdesk.com (For Live Chat and Self-Support)

