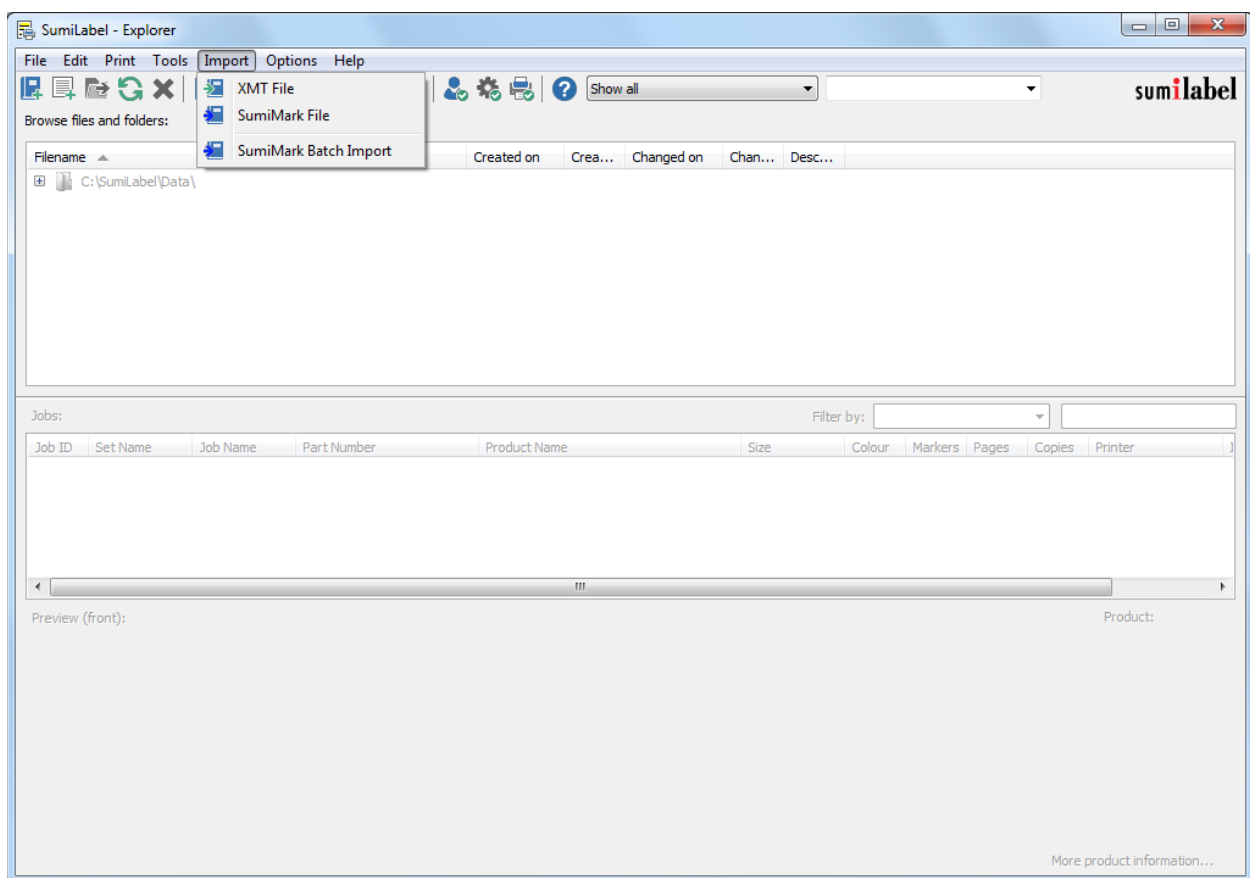


Importing SumiMark Files

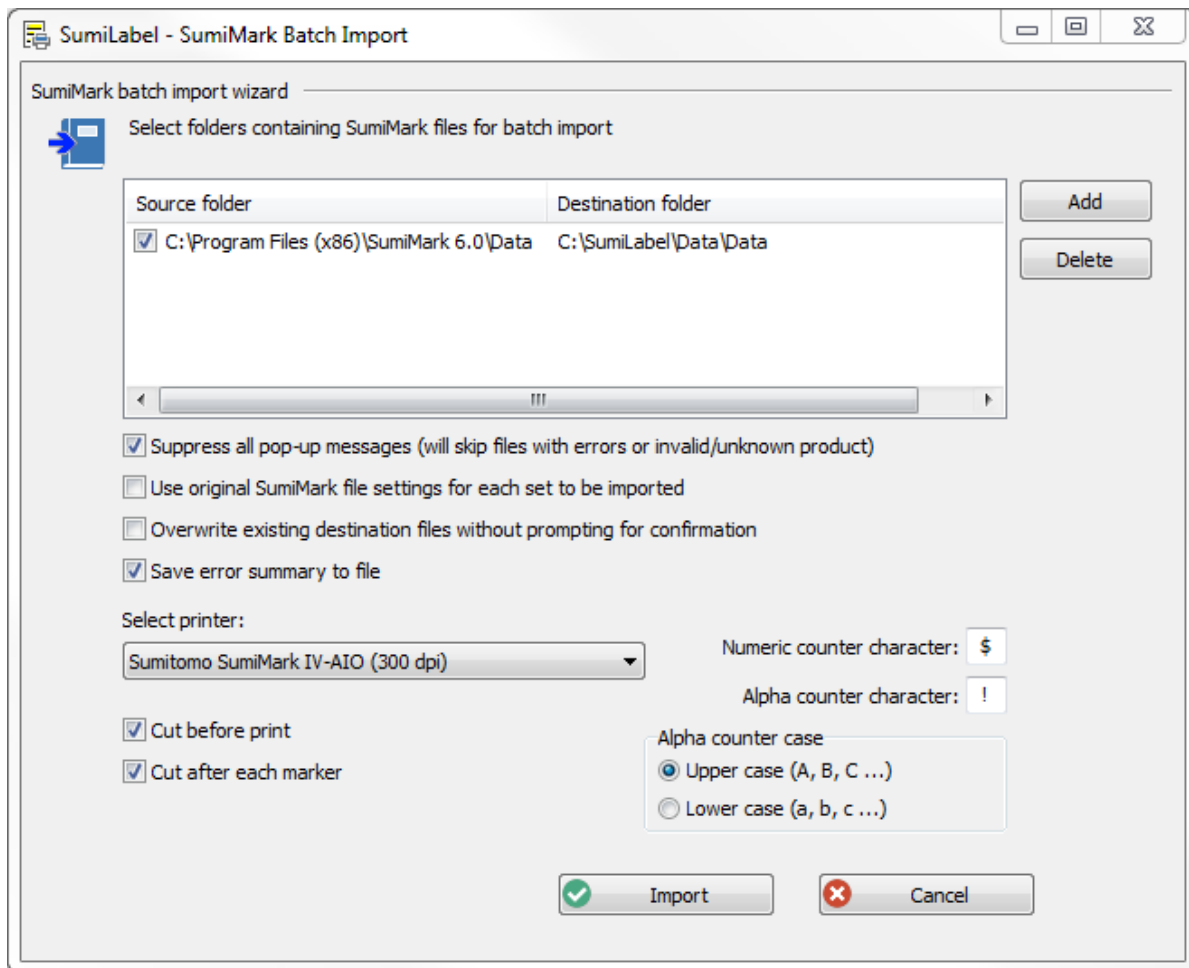
We don't charge import fees

When upgrading from SumiMark 6.0 to SumiLabel, you'll likely have some old SumiMark files that need to be imported. Thankfully, whether it's one file or one dozen, Sumilabel makes importing easy!

Please note: SumiMark files with graphics cannot be imported. Files with Serialization can, as long as the Serialization begins on the first marker in the Job.



- From the main SumiLabel window, choose Import, and then choose SumiMark File for an individual file or SumiMark Batch Import to import an entire folder, along with all subfolders. The imported files will appear in their own folder within SumiLabel's Data directory.



- The default settings in the SumiMark Batch Import feature are largely designed to be “one size fits all”. If “Numeric counter character” and “Alpha counter character” don’t mean anything to you, you need not concern yourself with them. Otherwise, you can set them in accordance with your specific serialization needs. If there are any errors during importation, with “Save error summary to file” checked, a text file will be generated along with the files to explain the errors encountered.

If you have any questions, comments, or concerns, please don’t hesitate to contact Identification Technical Support:

- Phone : +1 (760) 761-0600 x255
- E-mail : sumimark@seipusa.com
- sumitomo.freshdesk.com (For Live Chat and Self-Support)

