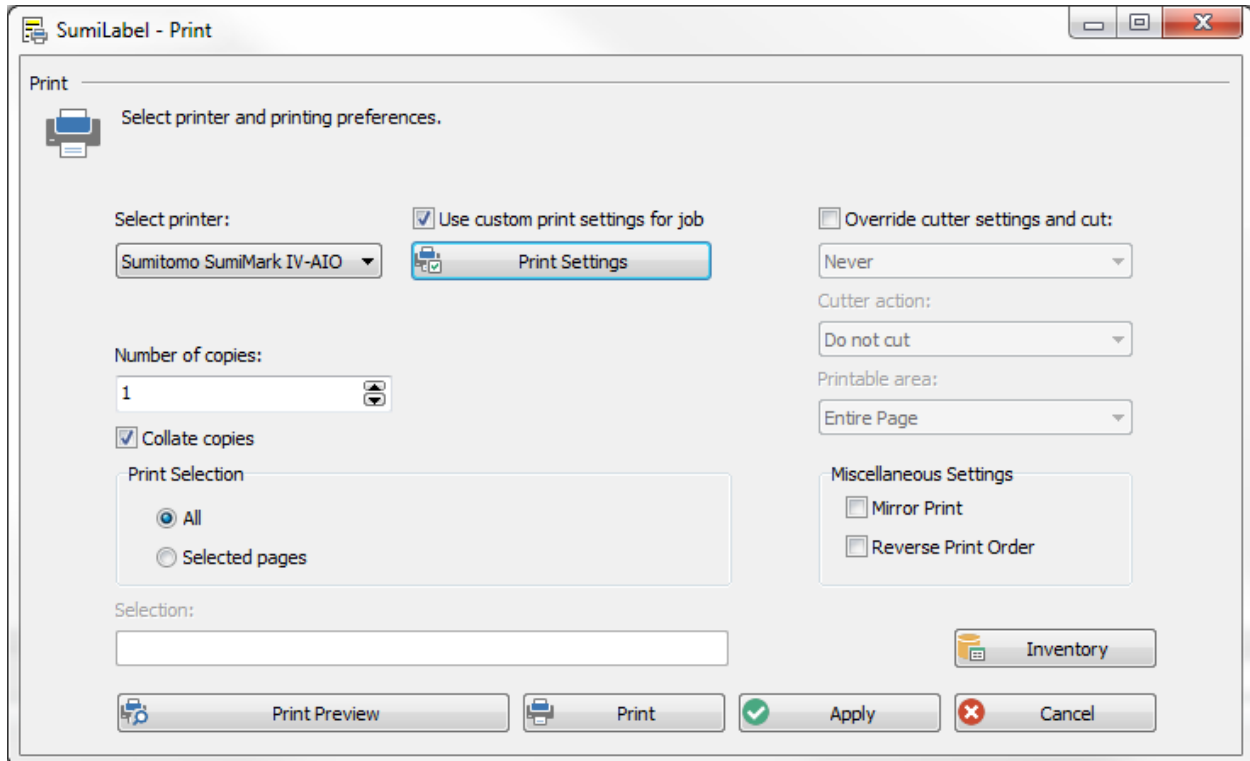


# How to Turn Cutter On/Off in Sumilabel

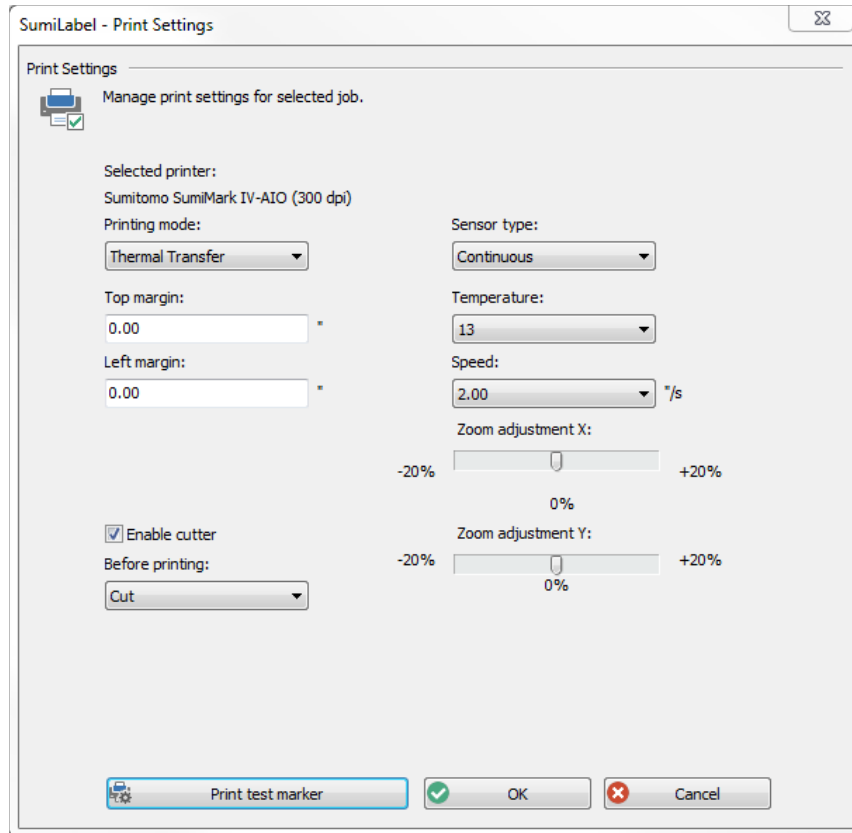
*Cutter on, cutter off*

If you want to enable or disable the cutter for a particular job, it can be done from within Sumilabel on a per-job or global basis.



## For PER JOB cutting/not cutting:

- Open the Set in question, open the Print dialog, then check "Use custom print settings for job" and click Print Settings.
- Check or Uncheck "Enable cutter" depending on desired effect. Once you've made the change, click OK, then click Apply.
- Choose Yes when prompted with "Print settings have changes. Save print settings to job?"



**For GLOBAL/PERMANENT cutting/not cutting:**

- From the main window of SumiLabel (*SumiLabel - Explorer*) navigate to Options->Printer Options.
- Verify that the printer in question appears down in the "Application printers:" subwindow, then select it and click on Default Print Settings.
- Check or Uncheck "Enable cutter" depending on desired effect. Once you've made the change, click OK.

**If you have any questions, comments, or concerns, please don't hesitate to contact Identification Technical Support:**

- Phone : +1 (760) 761-0600 x255
- E-mail : [sumimark@seipusa.com](mailto:sumimark@seipusa.com)
- [sumitomo.freshdesk.com](http://sumitomo.freshdesk.com) (For Live Chat and Self-Support)

