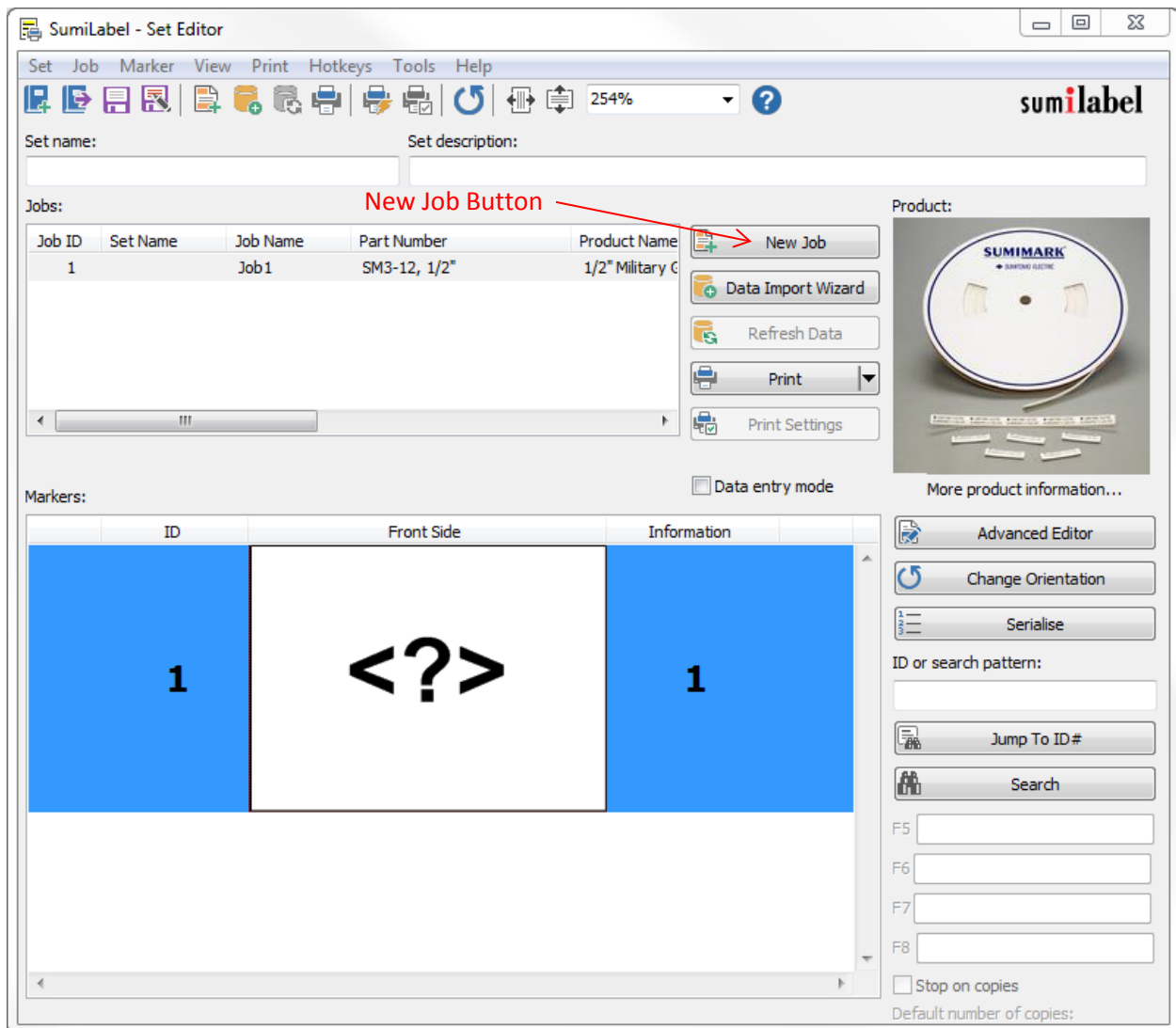


# How to Add Jobs to Existing Sets

*When one job's just not enough*

For wire harnesses which require tubing of several different types and sizes, dividing them each into their own Job with a given Set is an efficient approach. SumiLabel makes setting up new jobs easy! **This “how-to” assumes that you’re already familiar with basic SumiLabel functionality such as creating a new set and using the Set Editor.**

- In SumiLabel, create a new set file or open an existing one. Note that during Set creation, you are brought to the New Job Wizard, where you choose the type and size of tubing (called the Product Grade and Part Number respectively) for the first Job in the Set.



- Once at the Set Editor window, click the button labeled New Job, to the right of the “Jobs” subsection.
- The New Job Wizard will open again. Choose the type and size of tubing, modify the Design Template as desired or load a template, then click OK.
- In the “Jobs” subsection, you will now see another Job with the Part Number of the tubing you selected. If you wish to distinguish the Jobs further than simply “Job” and number, double-click the Job Name field and enter a new name. **Please Note:** *Printing and other job-specific functionality will function with the selected job only. Ensure that the job you wish to work with is selected before proceeding. Clicking once on a job will select it, highlighting it for visual confirmation.*

**If you have any questions, comments, or concerns, please don't hesitate to contact Identification Technical Support:**

- Phone : +1 (760) 761-0600 x255
- E-mail : [sumimark@seipusa.com](mailto:sumimark@seipusa.com)
- [sumitomo.freshdesk.com](https://sumitomo.freshdesk.com) (For Live Chat and Self-Support)

